

**COMMUNITY HEALTH CENTERS**

3C Community Clinic  
All-Inclusive CHC  
Allmed of Los Angeles  
AltaMed Health Services  
Angeles CHC  
APLA Health  
Arroyo Vista Family Health Center  
Asian Pacific Health Care Venture  
BAART Community HealthCare  
Behavioral Health Services  
Benevolence Health Center  
Beverly Community Clinic  
CareMed CHC  
Central City CHC  
Central Neighborhood Christian  
Chinatown Service Center  
Clinica Bienestar  
Clinica Monseñor Oscar A. Romero  
Complete Care CHC  
Comprehensive CHC  
Gracelight Community Health  
Herald Christian Health Center  
Institute for Counseling & Education  
JWCH Institute  
Kheir Clinic  
Kwang He Won Health Center  
Los Angeles Christian Health Centers  
Los Angeles LGBT Center  
Mission City Community Network  
Northeast Community Clinic  
Planned Parenthood Los Angeles  
Planned Parenthood P&SGV  
Precision Health Center  
Saban Community Clinic  
San Judas CHC  
St. Anthony Medical Centers  
Tri-State CHC  
Unicare CHC  
United American Indian Involvement  
Universal CHC  
Via Care CHC  
White Memorial CHC

# CONGRESSIONAL DISTRICT 34

## REPRESENTATIVE JIMMY GOMEZ

(2024 DATA)\*



**43**  
**ORGANIZATIONS**



**104\*\*\***  
**CLINICAL SITES**



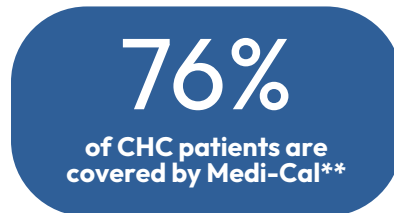
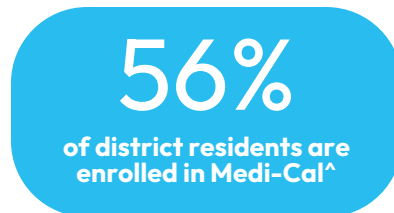
**376,937**  
**PATIENTS**



**1,420,173**  
**ENCOUNTERS**

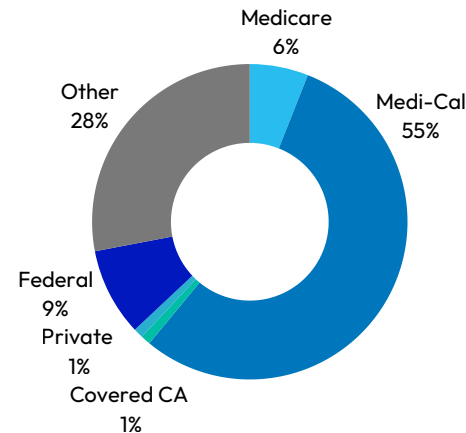
### COMMUNITY HEALTH CENTERS...

#### ARE THE FOUNDATION OF THE SAFETY NET



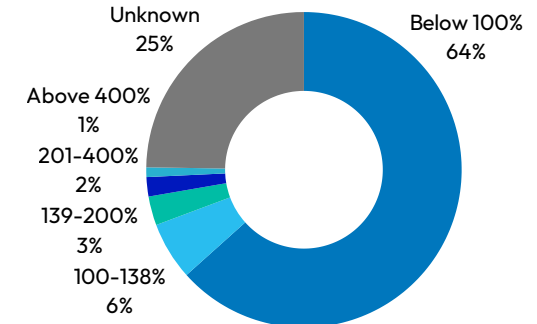
#### RECEIVE REVENUE FROM MULTIPLE SOURCES

**55% of CHC revenue comes from Medi-Cal**



#### CARE FOR UNDER-RESOURCED COMMUNITIES

**73% of patients have low incomes (under 200% FPL)**



Sources:

\*California Department of Health Care Access and Information (HCAI) 2024 Primary Care Clinic Annual Utilization Data.

\*\*HCAI 2024 Data and Health Resources and Services Administration (HRSA) Health Center Program Uniform Data System 2024 Data.

<sup>^</sup>UC Berkley Labor Center Medi-Cal Enrollment and Spending by District and County 2024 (Updated January 2025).