

CONGRESSIONAL DISTRICT 32

REPRESENTATIVE BRAD SHERMAN

(2024 DATA)*

COMMUNITY HEALTH CENTERS

AIDS Healthcare Foundation
All-Inclusive CHC
Apex CHC
Centro Medico Community Clinic
Clinica Monseñor Oscar A. Romero
Complete Care CHC
Eisner Health
El Proyecto del Barrio
Los Angeles Jewish Health
Northeast Valley Health Corporation
Planned Parenthood Los Angeles
Southern California Medical Center
Tarzana Treatment Center
Todos Para La Salud
Valley Community Healthcare



15
ORGANIZATIONS



20***
CLINICAL SITES



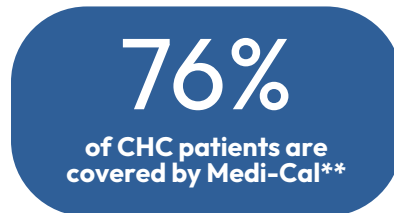
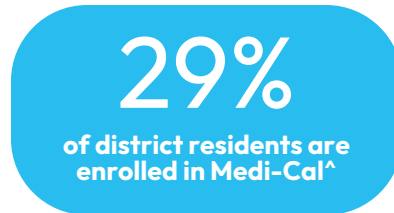
62,096
PATIENTS



245,012
ENCOUNTERS

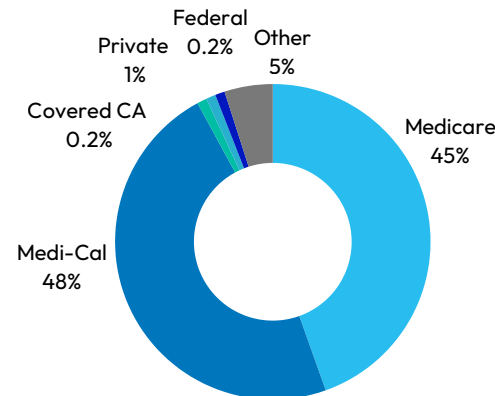
COMMUNITY HEALTH CENTERS...

ARE THE FOUNDATION OF THE SAFETY NET



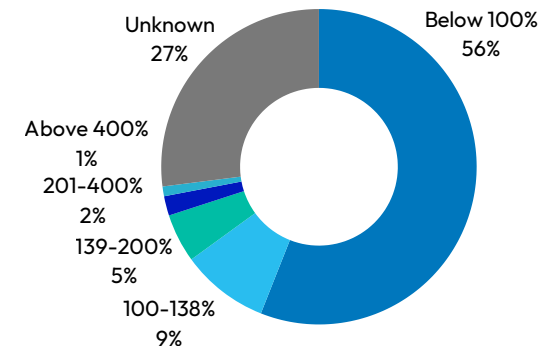
RECEIVE REVENUE FROM MULTIPLE SOURCES

48% of CHC revenue comes from Medi-Cal



CARE FOR UNDER-RESOURCED COMMUNITIES

70% of patients have low incomes (under 200% FPL)



Sources:

*California Department of Health Care Access and Information (HCAI) 2024 Primary Care Clinic Annual Utilization Data.

**HCAI 2024 Data and Health Resources and Services Administration (HRSA) Health Center Program Uniform Data System 2024 Data.

[^]UC Berkley Labor Center Medi-Cal Enrollment and Spending by District and County 2024 (Updated January 2025).