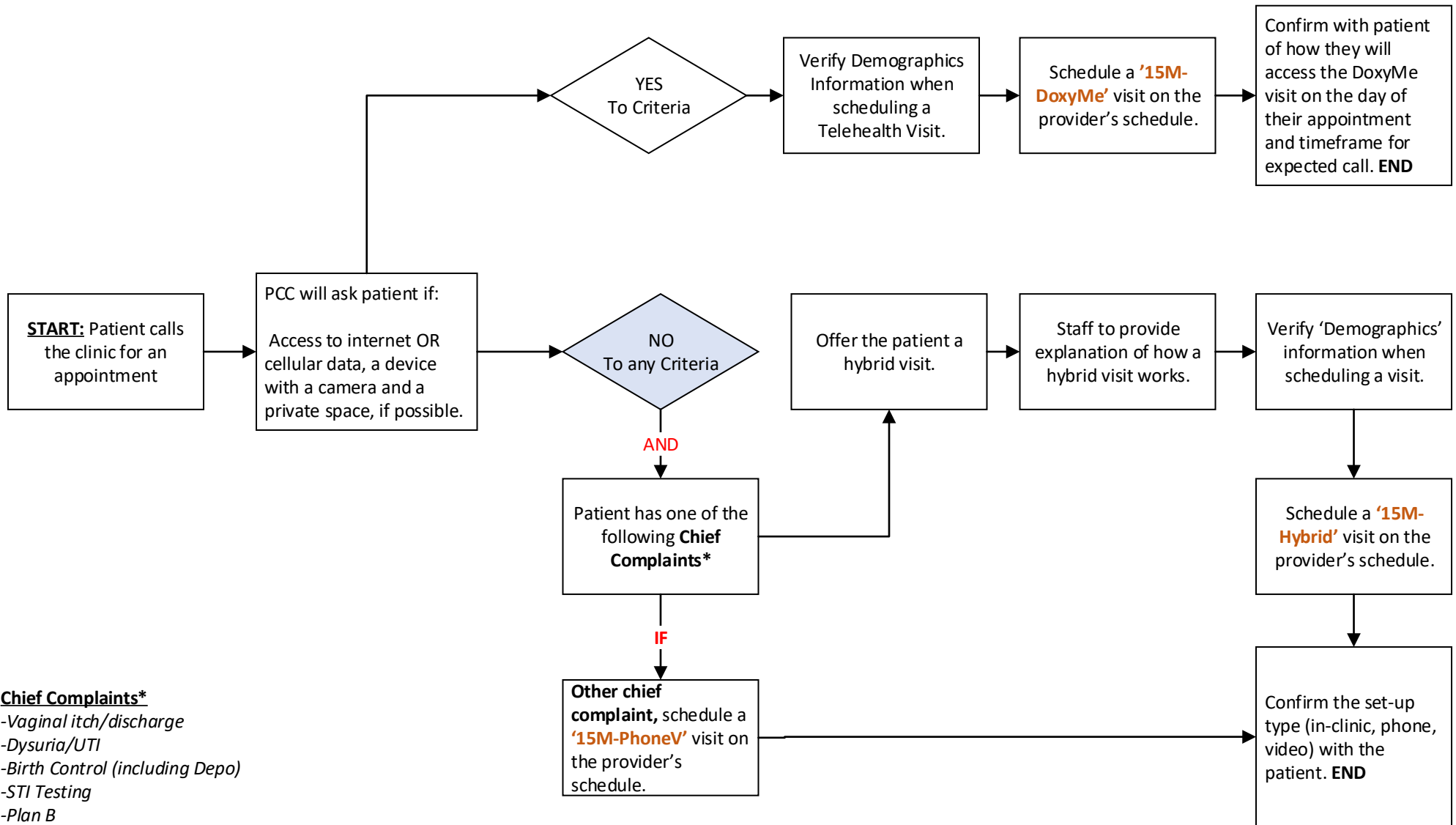


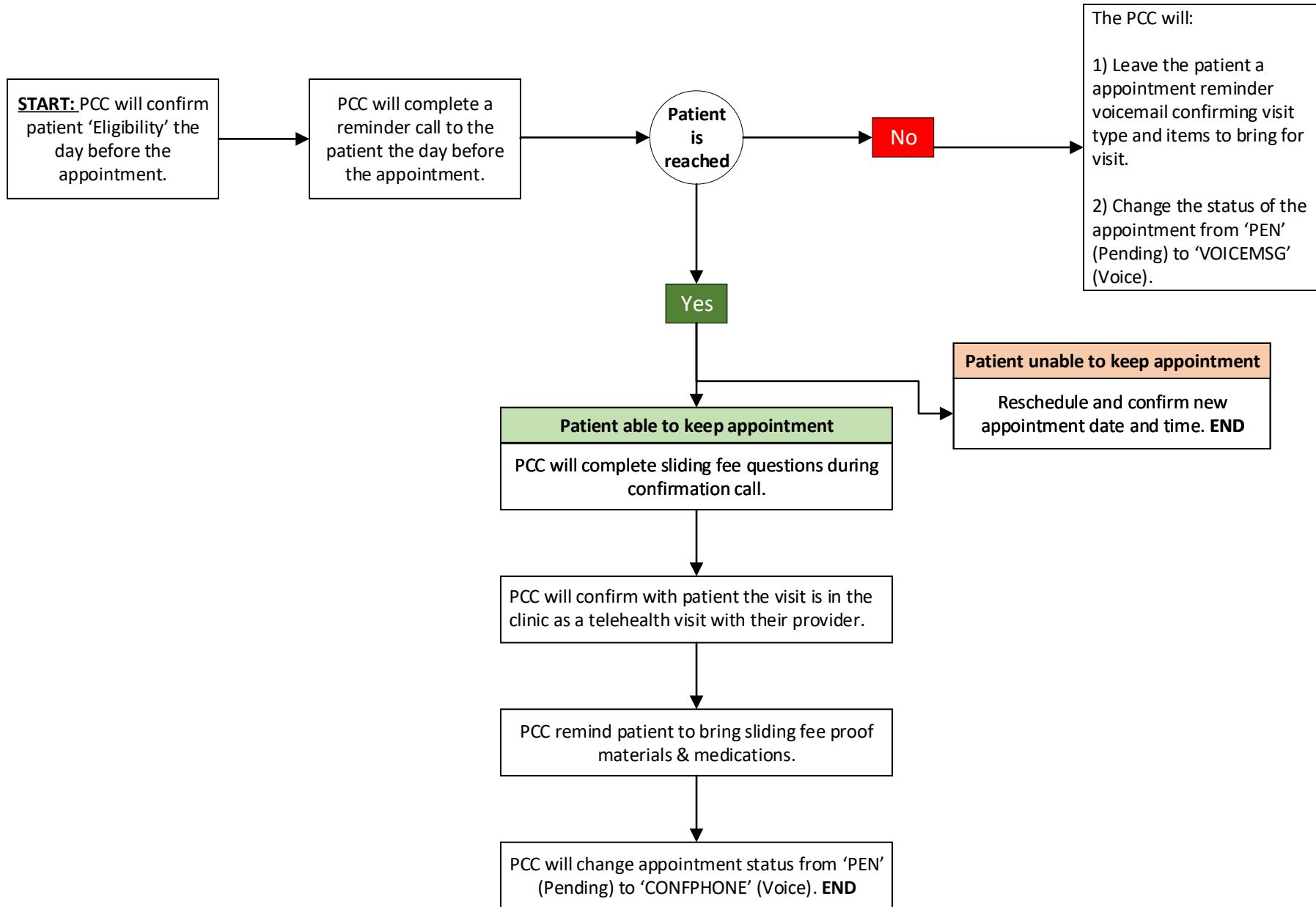
Scheduling a Hybrid Visit



Chief Complaints*

- Vaginal itch/discharge
- Dysuria/UTI
- Birth Control (including Depo)
- STI Testing
- Plan B
- Rash
- Anemia follow-up
- Blood pressure check or blood pressure medication refill if not seen in last 3 months
- Diabetes follow-up or diabetes medication refill if not seen in last 3 months

Reminder Calls: Hybrid Visit



Hybrid Visit Workflow

